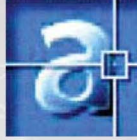


# SteelPac RCD

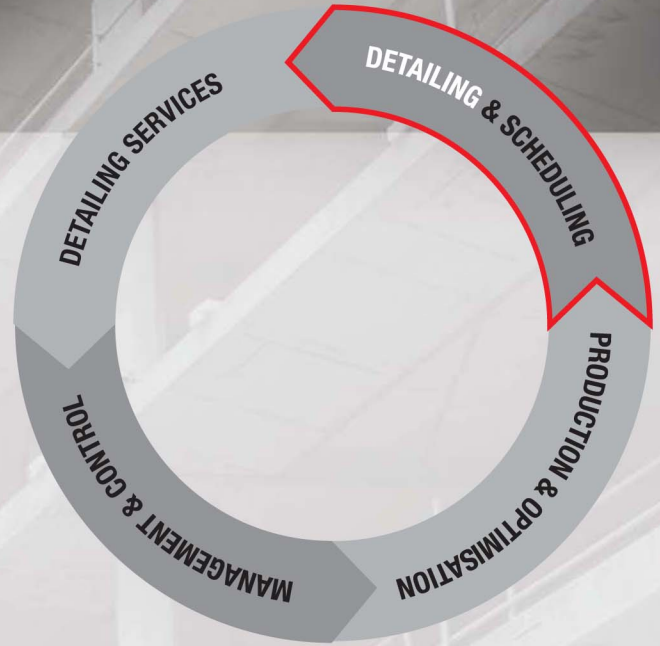
## Rebar Detailing for AutoCAD



SteelPac RCD is seamlessly integrated into RCS and SITE to extract all rebar details directly from your drawings into the supply chain. The program has been successfully used by Contractors, Consulting Engineers, Detailing firms and Reinforcement supplier for over 15 years on many of the world's largest & most prestigious building and civil engineering projects. SteelPac RCD is an AutoCAD application making it easy for detailers to learn.

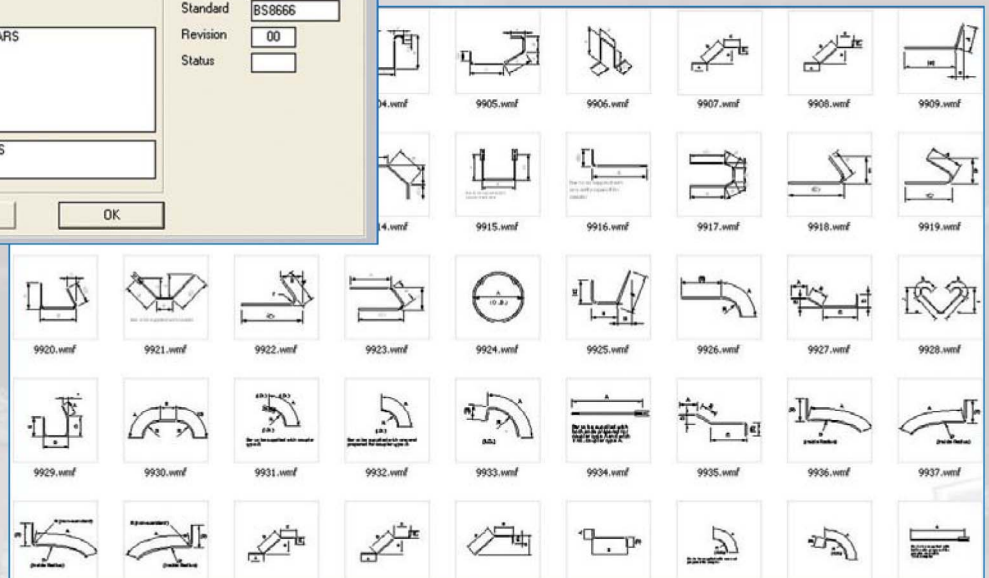
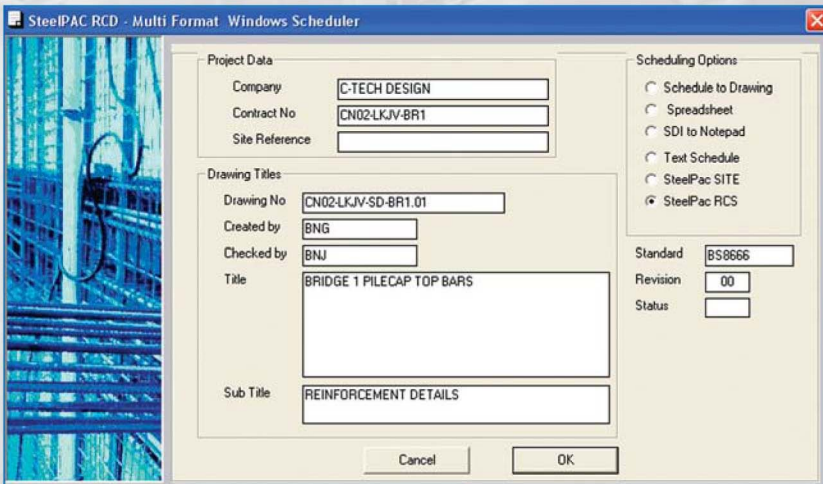
Bar Bending Schedules are produced automatically in printed or electronic format and can comply with many standards such as ACI 315, BS4466 or BS8666 (2000 & 2005) and SABS 82.

SteelPac RCD is widely used as part of the SteelPac's electronic rebar supply chain.



## Why Steel Pac RCD?

- Designed by RC Detailers for RC Detailers.
- An integral part of the SteelPac suite.
- Fully Automatic electronic bar schedules.
- Stretch and update – quick revisions.
- Multi edit – Bulk edit with a single command.
- Eliminate errors from bar bending schedules.
- Automatic RC detailing macros.
- Easy to use
- Adds rebar functionally to AutoCAD.
- MDI functionally – reuse existing AutoCAD drawings and details.
- Become part of the SteelPac Electronic rebar supply chain.



## Product Specification- Principal Features

### Automatic bar banding schedules

- As each set of bars is detailed, Steel RCD measures and attaches the data to a standard ACAD attributed text block. There is no additional overhead which can dramatically slow system down as the drawing grows in size.
- SDI file creation is fully integrated with all the other SteelPac products. Simply select any part the drawing to schedule and all bar data is passed straight through to SITE. Schedules can be in accordance ACI 325, BS4466, SABS82, BS8666 (2000 & 2005) or customised to suite.
- Scheduling can also be to drawing, Excel spreadsheets, ASCII text files of DXF.

### Automated RC Detailing Macros

- Detailing Macros for pad foundations, columns slabs and beams with minimal input dimensions, Bar arrangements & standard details and components can be saved to file and repeatedly re-used

### Anchorage and Lap Lengths

- Anchorage and lap lengths can be calculated and added to bar lengths based on BS 8110 or BS 5400 formulae.
- Different material strengths can be accounted for.
- Smooth, Type I or Type II bars can be accounted for.
- 40% or 100% can be added to lap lengths if required.
- Lap lengths can be based on number of diameters or specified as a length in mm.
- Stock lengths runs can be rapidly lapped together.

### Shape Code 99's

- SteelPac RCD is supplied with a comprehensive set of shape code 99 bars to address non-standard shapes.
- A simple to edit formula file that allows the user to create as many new bar types as he likes.

### Customisation

- SteelPac RCD can be configured to suite he detailing standards in many different countries and organizations around the world.
- Users can customise many aspects of the software including, additional bar types, bar bending schedule formats, drawing styles & cliffs to suite the user's individual preferences of project requirements.

### Varying Lengths Bars

- Varying lengths bars between any shaped surfaces, such as parabolic arches, circular slabs, cubic splines, free hand edges or any combinations of the above.
- Varying leg lengths can be calculated as any mathematical function of another leg. Leg lengths can be calculated with almost any mathematical function.

## Product Specification – Principal Benefits

### End of Use

- SteelPac RCD is easy to use. All commands use AutoCAD style prompting making the program understandable and vary easy for CAD operators to use.
- The program is structured to operate in the same way as manual detailing but with all the tedious tasks removed.
- All commands have been optimised for minimum user input to make detailing fast accurate and extremely efficient.

### Multiple Editing and Updating

- Allows stretching of detail and updating of all bar information in a part of or all of the drawing, with one easy command. Tracks of all the stretch-and-update information in a history file.
- Any of the following functions can be carried out simultaneously in one hit on the whole drawing or any part of a drawing, using an AutoCAD selection set:-
- Incrementing of all the bar marks by a fixed amount
- Renumbering of all the bar marks in a contiguous sequence starting from a specified number.
- Addition of prefixes or suffixes to all the bar marks.
- Incrementing or decrementing all the diameters to the next standard size.
- Change the run lengths or spacing and automatic recalculation of the number of bars.
- Changes to the lengths of any legs, placing description, number of members and revisions.

### Curtailment

- Bar lengths can be automatically calculated for:-
- Hogging bar lengths as % of spans
- Curtailment lengths based on spans.
- Standard curtailment rules to BS 8110.
- Bars anchored 12d beyond the centre line of support.
- Bars anchored as effective depth or full tension lap beyond the position where the bar is no longer required.

**CONSTRUCTIVE**  
TECHNOLOGIES

#### Dubai Address:

Constructive Technologies Group  
P.O. Box 62069, Dubai, UAE  
Tel: +971 4 321 4516 Fax: +971 4 321 4517